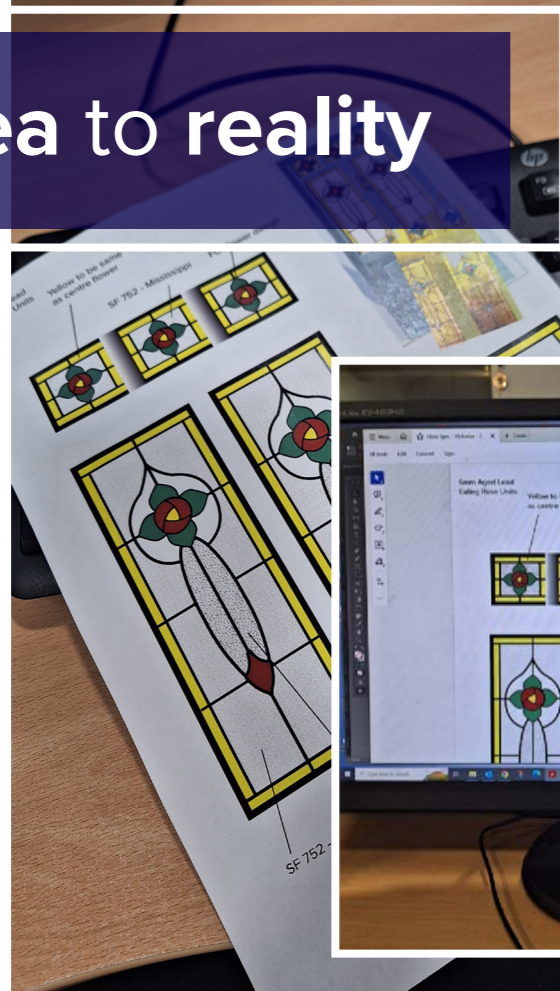


# the **PERIOD DOOR** collection

Stunning doorsets designed to complement  
the authentic styling of the home



# from idea to reality

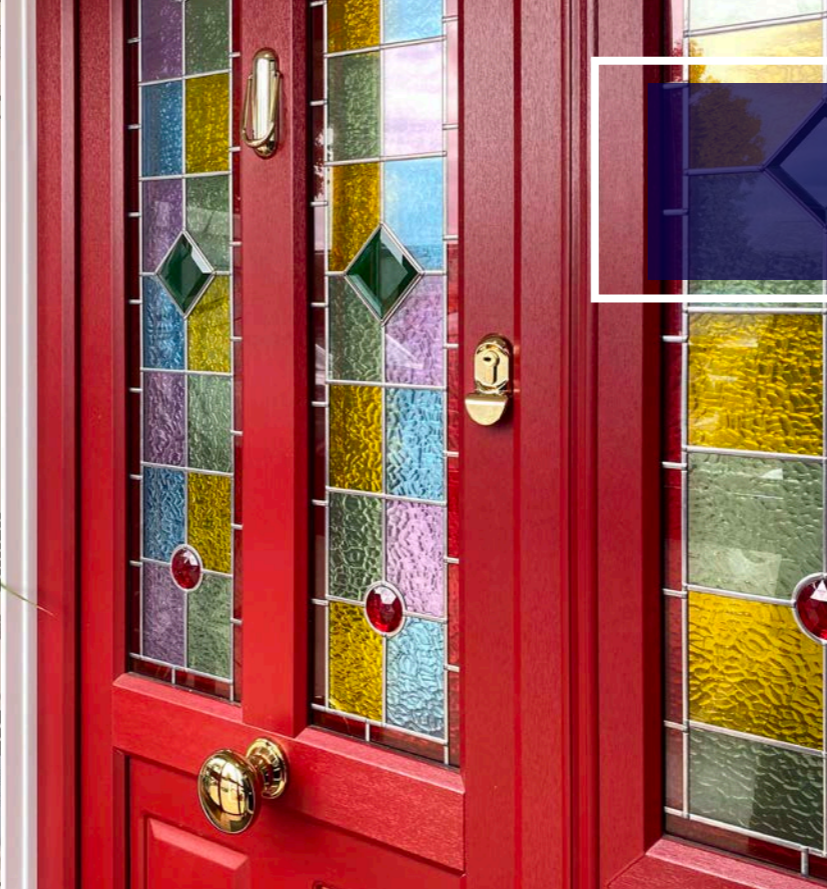


# our period doors

Our Period Door Collection began with a selection of designs that emulate the features of properties from the 1700 - 1900s.

This timeless collection of doors replicate the true timber doors used in properties from six historical eras throughout this 300 year period. We have taken our inspiration from the Georgian, Regency, Victorian and Edwardian architectural styles, as well as being influenced by door designs found on properties with an Art Deco appearance, and the typical homes from the 1930s.

These uPVC doors rival any traditionally designed composite door and are perfect replacements for the wooden doors found on older properties.



When designing this collection of doors, many hours were spent researching each era of building styles. Once the designs were decided the fabrication process was put in place to combine mechanical joints, welding plus the use of astragal bars to create the overall effect.

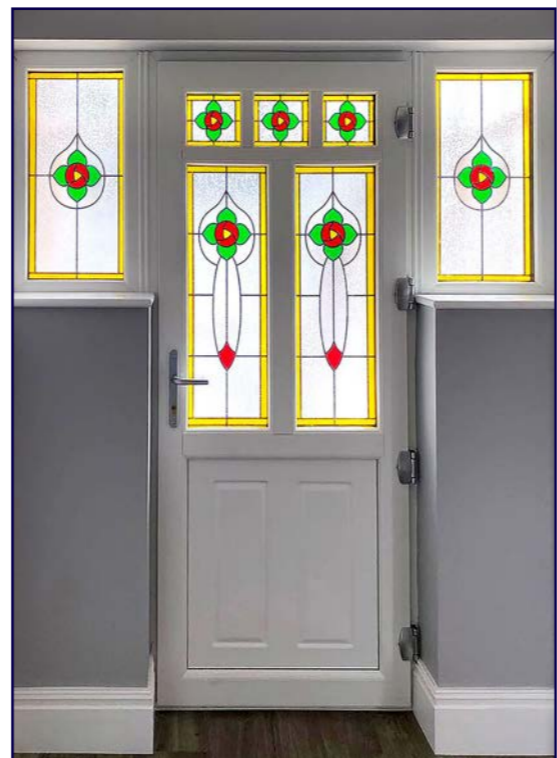
With many authentic features required to replicate a true timber door, it was down to the ironmongers for inspiration, settling on traditional styled handles, knockers and door knobs. The introduction of a slam shut lock also provides the option to not have a handle similar to traditional rim latches. This all culminates into a collection of doors that will confidently grace the front of any building.



**Customer requests for alternative door styles, replication of existing glass designs or to produce a door that is more modern in look has seen our portfolio increase; if you have a door to replace and its not in our brochure - just ask!**

## why buy a period door?

- Door designs to suit all property types
- Bespoke designs to customer's choice
- High Security locking system
- Energy efficient - 28mm-44mm panels and glazing for heat retention and efficiency.
- Unlimited glazing options to create individuality
- Shaped frames
- Traditional styled door furniture includes finger pulls, door knockers and centre pull knobs
- Smart Tech options available
- 21 door colours (incl White) to choose from with matching frame



## one step at a time?

Choosing a door can be as simple as perusing this brochure, picking the door from the gallery that is grabbing your attention.

Or

You can take it one step at a time to get the door of your dreams:-

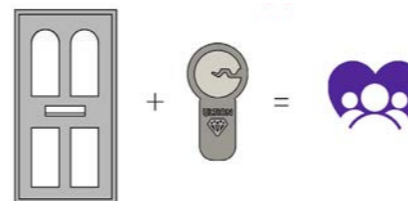
- What door style suits the property?
- What colour door do you want?
- Do you want coloured glass, or just obscure glass? Do you have an idea of glazing that isn't shown in this brochure?
- What about door furniture, do you want traditional ironmongery or just a pad handle?
- Do you want a door that is more modern? Choose flat panels and contemporary styled hardware to change the look of a door style.
- Do you have a door style that isn't in this brochure? Contact us to see if it's possible to manufacture exactly what you need.



## security is important

With security top of every homeowners list, our Period Doors are fitted with the highest level 3\* plus cylinder available on the market as standard.

What stands between your family and an intruder?  
**Your Door!**



An alarm system will tell you when someone is in your home. Your **Ultion door lock** stops them getting in!

It is reported that 76% of intruders go through the front door and not through the windows; it take 9 seconds to snap a standard door cylinder and enter the home.

Securing your doors with the Ultion 3\* Plus kite marked, Sold Secure Diamond lock defends your home from all known attack methods.

For that extra peace of mind each door cylinder comes with a £5,000 Guarantee.

You can also customise your key. Why not opt for a key fob that lights up in the dark, or one that is coloured to your liking. For the more tech savvy, Ultion also provide a key tracking service that works with Apple Find My Phone app, so you will never lose your front door key again.



# your door inspiration

## the GEORGIAN

**THE GEORGIAN** door is a grand, panelled door found on properties built between 1720 and 1820. A classic style influenced by Roman architecture and consisting of six panels, these doors would be typically found sat between two columns with a decorative fanlight above.



**the Georgian**  
Colour: Pearl Grey  
Panels: Flat

**the Georgian 1**  
Colour: Schwarzbraun  
Glass: Sandblasted with Clear Text  
Panels - LR200 Mouldings

**the Georgian 2**  
Colour: Pearl Grey  
Glass: Diamond Bevels

**the Georgian 4**  
Colour: Schwarzbraun  
Glass: CW11

**the Regency**  
Colour: Turner Oak  
Panels: Bolection 020 plus Raised & Fielded

**bespoke door design - customer request**



**the Victorian**  
Colour: Chartwell Green  
Glass: CW01 with Diamond Bevel Toplight

**the Victorian**  
Colour: Steel Blue  
Glass: CW18

**the Victorian 2**  
Colour: Schwarzbraun  
Glass: CW13

**the Victorian 2**  
Colour: Elephant Grey  
Glass: CW22

**the Edwardian**  
Colour: Ruby Red  
Glass: CW16

**the Edwardian**  
Colour: Schwarzbraun  
Glass: CW19



**the Art Deco**  
Colour: Schwarzbraun  
Glass: Sandblasted with Art Deco Numerals

**the Art Deco**  
Colour: Schwarzbraun  
Glass: CW21

**the 1930s**  
Colour: Irish Oak  
Glass: Clear with Astragal Bar

**the 1930s 2**  
Colour: Whitegrain  
Glass: Satin with Astragal Bar

**the 1930s 2**  
Colour: Irish Oak  
Glass: CW14  
Panels: Raised & Fielded

**the 1930s 3**  
Colour: Pebble Grey  
Glass: CW23

Panels options, hardware designs, glass styles and colours available are shown further on in this brochure



### our top picks for the Georgian doors



Traditional Door Knobs, Premium Doctor Knockers and Etched Glass

### Georgian Door Styles:



(design influences by properties built 1720-1820)

See our panel page for moulded options



the  
**REGENCY**

**THE REGENCY** door epitomises grandeur found in properties during Prince Regent's reign from 1811 to 1820. Door designs were classical, with the symmetrical stylings of the Georgian door and set in buildings with elaborate features such as decorative lead fanlights over the doorway, sash windows, ornate wrought iron balconies and fluted columns.



our **top picks** for the Regency doors  
Stainless Steel Escutcheon, Stainless Steel Wing door handle and Raised and Fielded panels

**Regency Door Styles:**



(design influences by properties built 1811-1820)

Regency

See our panel page for more options



the  
**VICTORIAN**

**THE VICTORIAN** door is a perfect replacement for the mock gothic styling of doors from the 1830-1901 era. The elaborate coloured designs and leadwork of the glazing units create the ornate glass effect found on a typical Victorian door.



our **top picks** for the Victorian doors  
Traditional Ring Pull Knocker, Finger Pull (no lever handle required) and Coloured Jewelled Glass

**Victorian Door Styles:**



(design influences by properties built 1830-1901)

Victorian Victorian 2

See our Glass page for more glazing ideas



the  
**EDWARDIAN**

**THE EDWARDIAN** door is a replica design from properties built in 1901-1918. Not quite as lavish as the Victorian, this panelled door is finished with a lead or bevelled window design to accentuate the appearance of this style of house.



our **top picks** for the Edwardian doors



Edgeless door furniture by Sweet; Knocker and Numerals in Stainless Steel. Shaped glazing for top and side units.

**Edwardian Door Styles:**



Edwardian

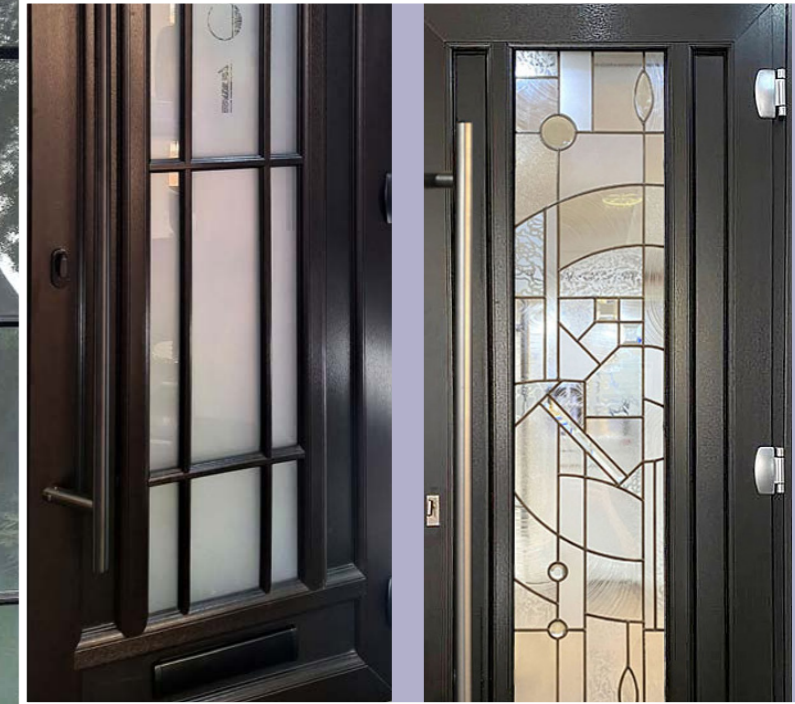
(design influences by properties built 1901-1918)

See our **Glass** page for more glazing ideas

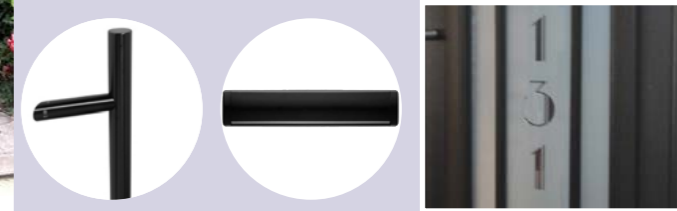


the  
**ART DECO**

**THE ART DECO** door has been designed to replicate the streamlined, symmetrical appearance of doors found on properties built between 1925 and 1939. A simple, modern effect of parallel straight lines and geometric designs create stunning doors that would definitely not look out of place on a house built with an Art Deco or contemporary edge.



our **top picks** for the Art Deco doors



Black Pull Bar, Black Premium Letterplate and Sandblasted Glass Unit with Clear Art Deco Font

**Art Deco Door Styles:**



Art Deco

(design influences by properties built 1925-1939)

See our **Glass** page for more glazing ideas

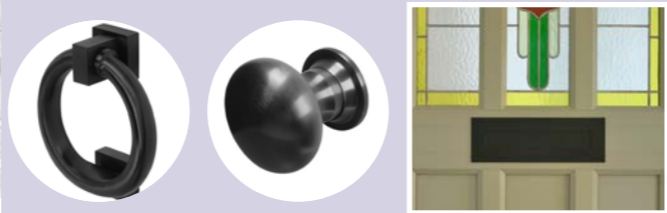


the  
1930s

**THE 1930s** door is based on the half timber and mixed red brick/pebbledash design of properties built in the 1930s. Typically an oak door with iron fittings, we have designed and produced this door with both modern and contemporary glazed options that would be the perfect replacement for homes built in this period.



our top picks for the 1930s doors



Coastal Hardware - Ring pull and Door Knob. Wide midrail of 169mm and traditional letterplate.

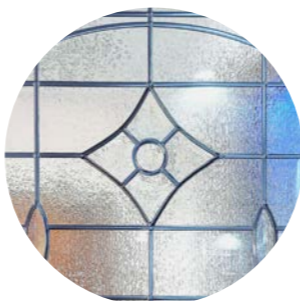
1930s Door Styles:



1930s 1930s 2 1930s 3

(design influences by properties built in the 1930s)

See our Glass page for more glazing ideas



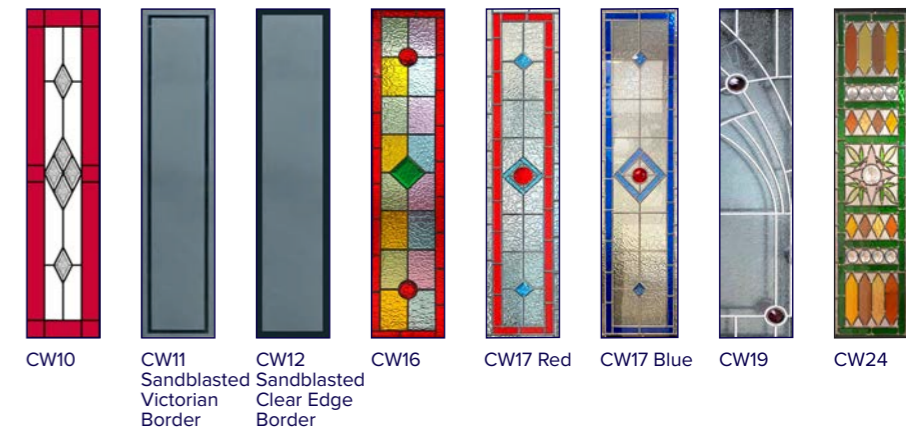
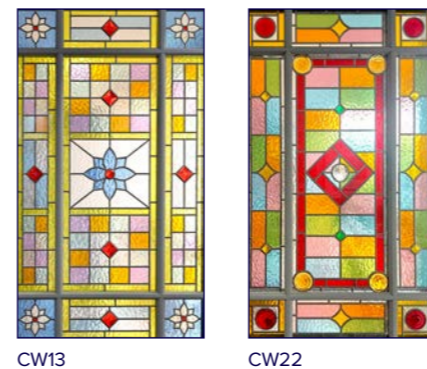
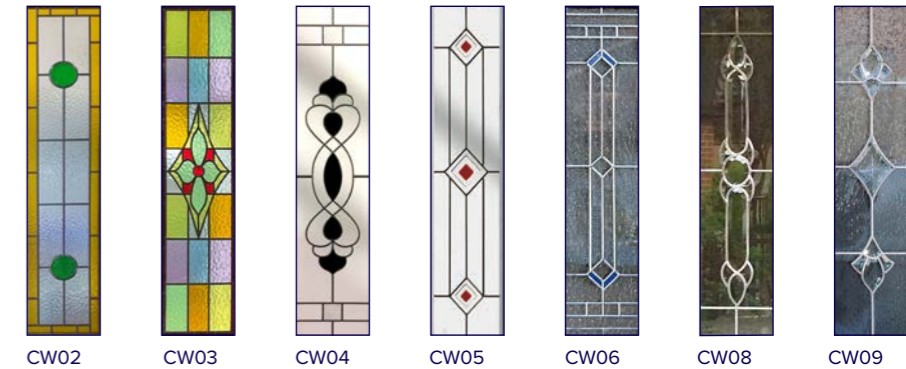
time to be decorative

Our glass designs can be anything from standard industry designs to bespoke customer requests. If we can re-create the look you want and our glass shop can provide the unit, we can supply a door the fits all your requirements.

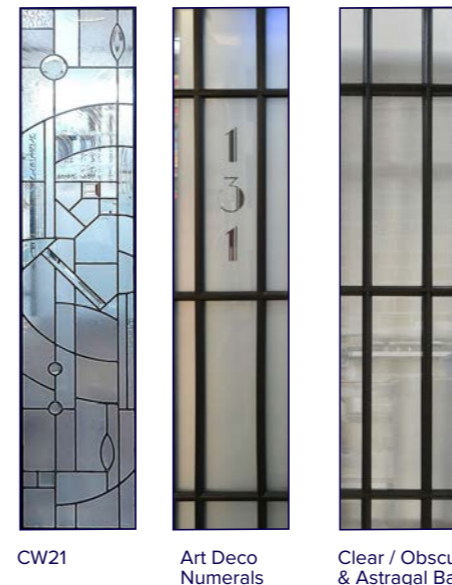
Victorian glass examples:



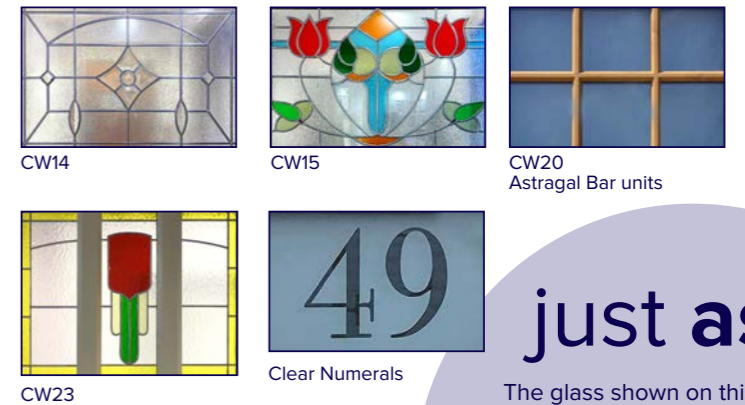
Edwardian glass examples:



Art Deco glass examples:



1930s glass examples:



just ask!

The glass shown on this page is just some of the examples available. If there is a particular design of glass required, just ask!



# upgrade for grandeur

Whilst your period door can be modern in appearance with the inclusion of flat panels and contemporary hardware, the real magic comes from the addition of mouldings and panels that transforms our doors to the majestic styles of yesteryear.

## panel styles:



Flat Panel



Inverted Panel



Raised and Fielded Panel

## moulding designs:



LR200 Mouldings



Bolection 030 Moulding



Bolection 020 Moulding

## bolted corners

For added strength and security, all our Period Doors are manufactured with bolted corner joints.



## enhanced designs

Mix your panel style and moulding designs for added effect.

Raised & Fielded Panel with Bolection 020 surround (pictured left)

Raised & Fielded Panel with Bolection 030 surround

## wide midrail

Adding a wider midrail to your door design is another nod to the original wooden door designs of our past. Specify our 169mm midrail option, and also have the choice to add a larger traditional styled letterplate too.



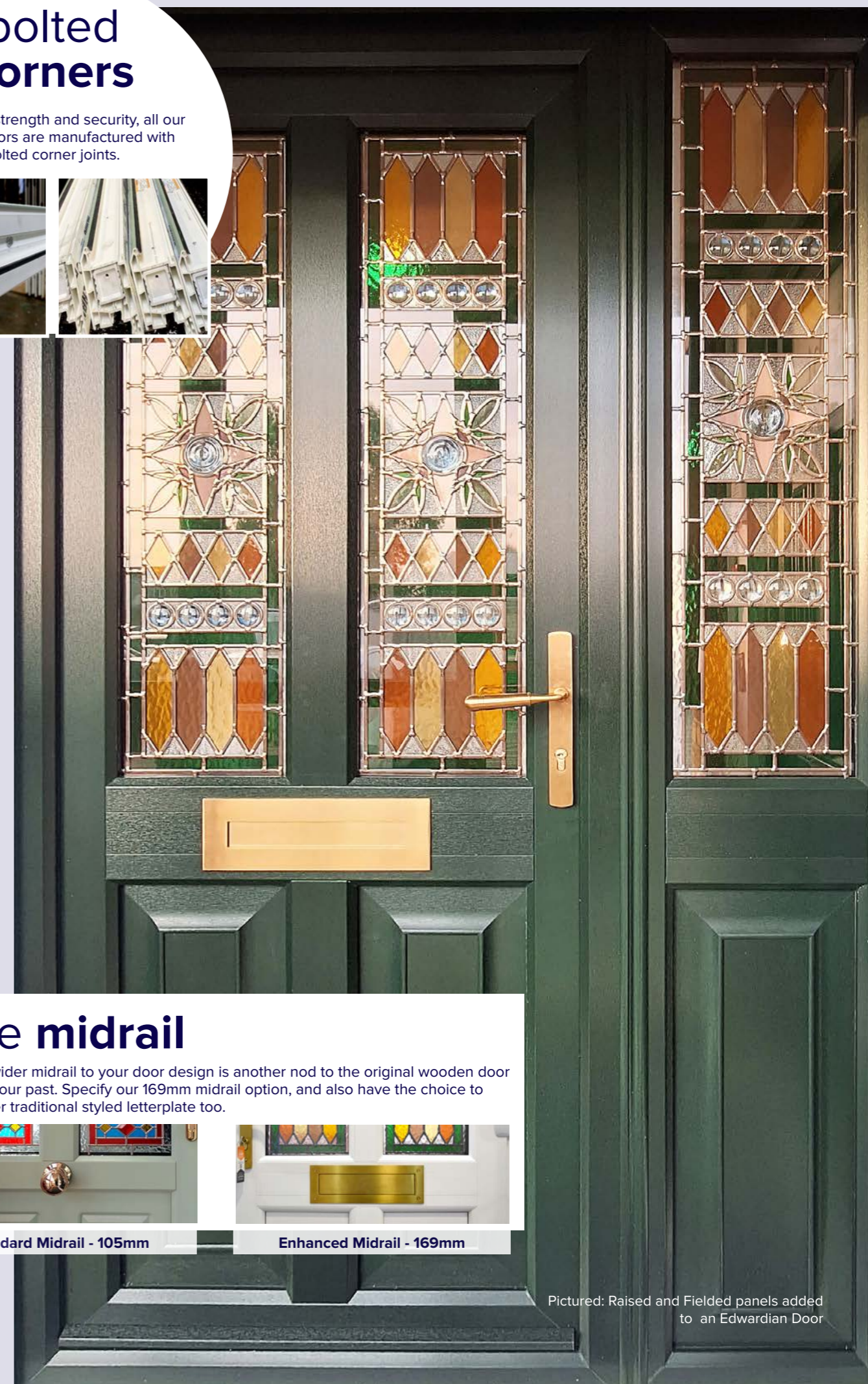
Standard Midrail - 105mm



Enhanced Midrail - 169mm

Pictured right: Bolection 030 mouldings added to a Victorian door

Pictured: Raised and Fielded panels added to an Edwardian Door



# dress your door

With many authentic features required to replicate a true timber door, it was down to the ironmongers for inspiration, settling on traditional styled handles, knockers and door knobs. The introduction of a slam shut lock also provides the option to not have a handle on the external face.



## traditional styles:

<b>Lever/Lever &amp; Lever/Pad</b> White, Chrome, Black, Gold, Satin, Enduro Steel, Grey-(L/L only)	<b>Monkey Tail &amp; Cottage Slimline Lever/Lever</b> Black, Pewter Patina	<b>Newbury &amp; Reeded Lever/Lever</b> Aged Brass, Aged Bronze, Polished Bronze, Polished Chrome, Polished Nickel	<b>Avon Slimline Lever/Lever</b> Aged Brass, Aged Bronze, Black, Pewter Patina, Polished Bronze, Polished Chrome	<b>Opera Lever/Lever</b> Stainless Steel, Satin Brass, Polished Brass, Polished Stainless Steel, Matt Black	<b>Hybrid Hinge</b> Gold, Black, Chrome, Satin, White, Brown, Tan, Cream, Chartwell Green, Anthracite Grey, Beige Brown	<b>InvisHinge</b> Black
<b>Doctor Knocker &amp; Pony Tail Knocker</b> Gold, Chrome, Satin, Enduro Steel	<b>Premium Doctor Knocker</b> Polished Stainless Steel, Stainless Steel, Polished Brass, Satin Brass, Satin	<b>Bull Ring Knocker</b> White, Pewter	<b>Stainless Steel Ring Knocker</b> Polished Stainless Steel, Stainless Steel, Polished Brass, Matt Black, Satin Brass	<b>Slimline &amp; Standard Urn Knocker with &amp; without spy hole</b> Gold, Chrome, Black, White, Satin, Enduro Steel	<b>Traditional Stainless Steel Letterplate</b> <i>(for use with 169mm Midrail)</i> Matt Black, Polished Brass, Polished Stainless Steel, Stainless Steel, Satin Brass	
<b>Pull Knob</b> White, Satin	<b>Stainless Steel Pull Knob</b> Polished Stainless Steel, Stainless Steel, Polished Brass, Matt Black, Satin Brass	<b>Stainless Steel Escutcheon</b> Brushed	<b>Oval Escutcheon</b> Gold, Chrome, Satin, Brushed, Black, Satin Brass, White	<b>Escutcheon &amp; Finger Pull</b> Black, Chrome, Gold, Rose Gold, Stainless Steel, Anthracite Grey, White	<b>Spyhole Viewer</b> Gold, Chrome, Black, White, Satin	<b>Stainless Steel Letterplate</b> Gold, Chrome, Black, White, Brushed, Satin

## edgeless, curved styles:

20 Year Guarantee



<b>Lever/Lever &amp; Lever/Pad</b> Black, Chrome, Gold, Stainless Steel, Anthracite Grey, White	<b>Lever/Lever 2* &amp; Lever/Pad 2*</b> Black, Chrome, Gold, Stainless Steel, Anthracite Grey, White	<b>Lever/Lever 2* Plus</b> Black, Chrome, Gold, Stainless Steel, Anthracite Grey, White	<b>Knocker 2 Part with &amp; without Spyhole</b> Black, Chrome, Gold, Stainless Steel, Anthracite Grey, White	<b>Urn Knocker with &amp; without Spyhole</b> Black, Chrome, Gold, Stainless Steel, Anthracite Grey, White

0123456789abc

**Numerals**  
Black, Chrome, Gold, Stainless Steel, Anthracite Grey

## contemporary styles:

<b>Offset Rectangular 'T' Bar Pull Handle</b> Stainless Steel, Black	<b>Offset Round 'T' Bar Pull Handle</b> Stainless Steel, Black, Satin Brass	<b>Mitre Lever</b> Polished Stainless Steel, Stainless Steel, Matt Black, Satin Brass	<b>T Bar Lever</b> Stainless Steel, Matt Black	<b>Wing Lever</b> Stainless Steel
<b>Square Door Knob</b> Stainless Steel, Matt Black	<b>Round Door Knob</b> Stainless Steel, Matt Black			

A period door doesn't need to be traditional looking. If a modern design is required, simply tweak your specification, add contemporary furniture and choose a non-grained finish such as Anthracite Grey Smooth.

## smart tech:

The **Ultion Nuki** smart technology allows you to control your front door from your phone, keypad or keyfob.

Your smart phone becomes your key\*, opening your door automatically when you arrive home and locking it as you leave.

There is also the option for keypad entry, by fingerprint or by pre-set code, or simply press the button on the programmed keyfobs available with your Nuki locks.

\*Keys are still available.



From you standard white, to the more authentic woodgrain effect of Turner Oak, we have a large collection of colours for stunning kerb appeal.

Choose an external colour with white on the inside, or maybe you prefer to have your colour choice on both sides as a special order.

# our colours

All colours available include matching frames.

<b>Whitegrain</b>	<b>Clotted Cream</b>	<b>Turner Oak*</b>	<b>Irish Oak</b>
<b>Golden Oak</b>	<b>Mahogany</b>	<b>Rosewood</b>	<b>Midnight Black*</b>
<b>Schwarzbraun</b>	<b>Anthracite Grey (grained)</b>	<b>Anthracite Grey (smooth)*</b>	<b>Slate Grey (grained)</b>
<b>Elephant Grey</b>	<b>Pearl Grey</b>	<b>Pebble Grey (grained)</b>	<b>Chartwell Green</b>
<b>Sage*</b>	<b>Racing Green</b>	<b>Ruby Red</b>	<b>Steel Blue</b>

\*colours not available as inverted panels



A close-up photograph of a blue uPVC door. The door features a silver ring handle and a stained glass window with a circular design and a red gemstone. The door is set against a white background.

uPVC engineered doors  
**of distinction**  
the **PERIOD DOOR** collection