



The R7, from the Residence Collection is available with the following manufacturing options:-

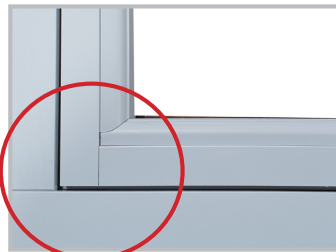
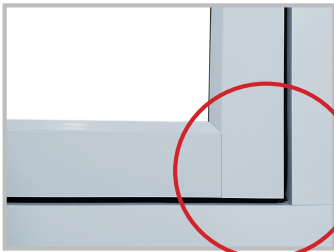


Fully Mechanical Flush Sash Windows & Open Out Doors

Mechanical Outer/Mechanical Sash Construction Method (MO-MS)

OUTSIDE

INSIDE



Mechanical Join

Mechanical Join

- Mechanically joined on both the internal and external sides and will be supplied fully glass bonded

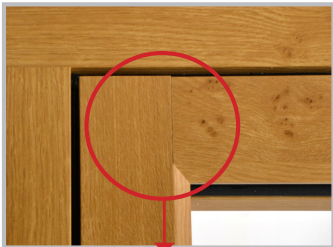


External Timber Look Welded Flush Sash Windows and Open Out Doors

Mechanical Outer/ETL Weld Sash Construction Method (MO-TWS)

OUTSIDE

INSIDE



ETL Weld

Pinch Weld

- Mechanically joined Outerframes on both the internal and external sides
- External Timber Look Weld on external side of sash
- Pinch Weld on internal side of sash
- Can be supplied unglazed

Pinch Welded Flush Sash Windows and Open Out/Open In Doors

Welded Outer/Welded Sash Construction Method (WO-WS)

OUTSIDE

INSIDE



Pinch Weld

Pinch Weld

- Pinch Weld outerframes on both the internal and external sides
- Pinch Weld sashes on both the internal and external sides
- Can be supplied unglazed

For further assistance, call 01702 613733

www.climatec-windows.co.uk

11-14 Fletchers Square, Temple Farm Industrial Estate, Southend-on-Sea, Essex SS2 5RN



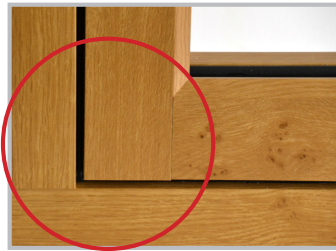
The R9, from the Residence Collection is available with the following manufacturing options:-



Fully Mechanical Flush Sash Windows & Open Out Doors

Mechanical Outer/Mechanical Sash Construction Method (MO-MS)

OUTSIDE



Mechanical Join

INSIDE



Mechanical Join

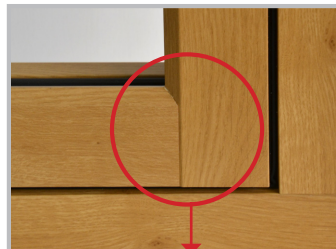
- Mechanically joined on both the internal and external sides and will be supplied fully glass bonded



External Timber Look Welded Flush Sash Windows and Open Out Doors

Mechanical Outer/ETL Weld Sash Construction Method (MO-TWS)

OUTSIDE



ETL Weld

INSIDE



Pinch Weld

- Mechanically joined Outerframes on both the internal and external sides
- External Timber Look Weld on external side of sash
- Pinch Weld on internal side of sash
- Can be supplied unglazed

Pinch Welded Flush Sash Windows and Open Out/Open In Doors

Mechanical Outer/Welded Sash Construction Method (MO-WS)

OUTSIDE



Pinch Weld

INSIDE



Pinch Weld

- Mechanically joined Outerframes on both the internal and external sides
- Pinch Weld on both the internal and external sides of the sash
- Pinch Welds are not available on R9 outerframes due to frame depth
- Can be supplied unglazed

For further assistance, call 01702 613733

www.climatec-windows.co.uk

11-14 Fletchers Square, Temple Farm Industrial Estate, Southend-on-Sea, Essex SS2 5RN



The Deceuninck Flush Sash is available with the following manufacturing options:-

External Timber Look Welded Flush Sash Windows

ETL Outer/ETL Sash Construction Method (TWO-TWS)

OUTSIDE



ETL Joins

INSIDE



Pinch Weld

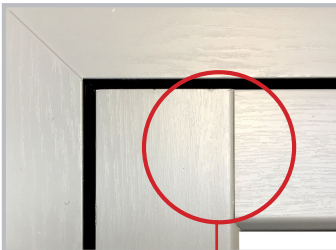
- External Timber Look Weld on external side of the outerframe
- Pinch Welds on internal side of the outerframe
- External Timber Look Welds on external side of sash
- Pinch Welds on internal side of sash



External Timber Look Welded Flush Sash Windows with Welded Outerframe

Welded Outer/ETL Weld Sash Construction Method (WO-TWS)

OUTSIDE



ETL Weld

INSIDE



Pinch Weld

- Pinch Weld Outerframes on both the internal and external sides
- External Timber Look Weld on external side of sash
- Pinch Weld on internal side of sash

Pinch Welded Flush Sash Windows

Welded Outer/Welded Sash Construction Method (WO-WS)

OUTSIDE



Pinch Weld

INSIDE



Pinch Weld

- Pinch Weld outerframes on both the internal and external sides
- Pinch Weld sashes on both the internal and external

For further assistance, call 01702 613733

www.climatec-windows.co.uk

11-14 Fletchers Square, Temple Farm Industrial Estate, Southend-on-Sea, Essex SS2 5RN

REHAU RIO FLUSH SASH WINDOW OPTIONS



The Rio is available with the following manufacturing options:-

Fully Mechanical Flush Sash Windows: *Mechanical Outer/Mechanical Sash Construction Method (MO-MS)*

OUTSIDE



Mechanical Joint

INSIDE

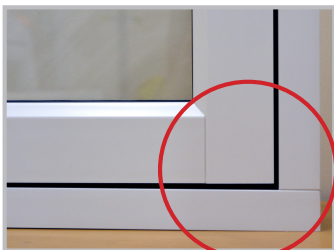


Mechanical Joint

- Mechanically joined on both the internal and external sides
- Can be supplied unglazed

External Timber Look Welded Flush Sash Windows: *ETL Outer/ETL Weld Sash Construction Method (TWO/TWS)*

OUTSIDE



ETL Weld

INSIDE

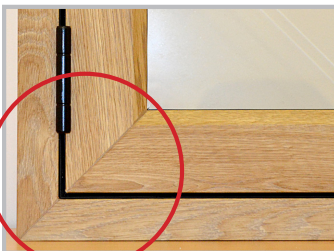


Pinch Weld

- External Timber Look Weld on external side of outerframe
- Pinch Weld on internal side of outerframe
- External Timber Look Weld on external side of sash
- Pinch Weld on internal side of sash
- Can be supplied unglazed

Welded Flush Sash Windows: *Welded Outer/Welded Sash Construction Method (WO-WS)*

OUTSIDE



Pinch Weld

INSIDE



Grooved Weld

- Pinch or Grooved Weld outerframes on both the internal and external sides
- Pinch or Grooved Weld sashes on both the internal and external sides
- Can be supplied unglazed

For further assistance, call 01702 613733

www.climatec-windows.co.uk

11-14 Fletchers Square, Temple Farm Industrial Estate, Southend-on-Sea, Essex SS2 5RN