

REMOVAL OF SASH WITH GT DUMMY-SASH LOK

The removal of fully glazed dummy sashes from window frames will now be a lot easier for installers with the GT Dummy-Sash Lok.

- A retention system that quickly and simply fits dummy sashes into window frames
- Comprises of 3 parts for the frame - a steel paddle plate and a steel top plate, which is fixed onto a profile related frame packer.
- The sash comprises of a plastic sash packer that carries a steel sash plate.
- A release tool is supplied for the easy removal of the sash when required.
- Available for Rehau and Calibre windows



Paddle Plate DSL001



Top Plate DSL002



Sash Plate DSL003



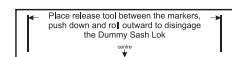
Profile Related Frame Packer



Profile Related Sash Packer

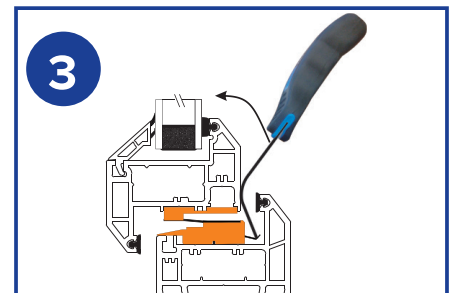
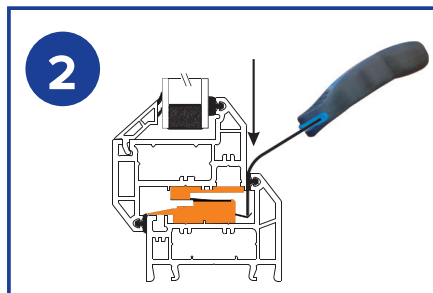
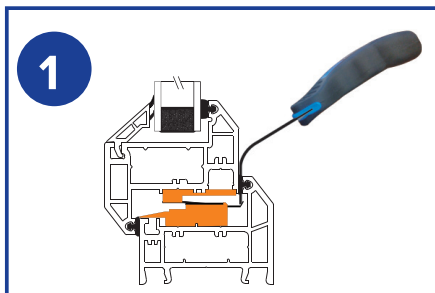


Release Tool



Release Instruction Label

REMOVAL OF DUMMY SASH



For further assistance, call 01702 613733

www.climatec-windows.co.uk

11-14 Fletchers Square, Temple Farm Industrial Estate, Southend-on-Sea, Essex SS2 5RN