

the **GEORGIAN**

(design influences by properties built 1720-1820)

THE GEORGIAN door is a grand, panelled door found on properties built between 1720 and 1820. A classic style influenced by Roman architecture and consisting of six panels, these doors would be typically found sat between two columns with a decorative fanlight above.

- PVCu doors bespoke to the original property type
- Two design styles available
- Choice of knockers, finger pulls and centre knobs complete the traditional look
- Variety of glass designs
- Fitted with Sigma 3d Adjustable Hybrid Hinges

- Slam shut door locks for authenticity
- 3" high security, Sold Secure Diamond cylinder
- Colours available (includes matching frame):

White Ash, Clotted Cream, Irish Oak, Golden Oak, Mahogany, Rosewood, Schwarzbraun, Anthracite Grey, Slate Grey (grained), Pearl Grey, Elephant Grey, Ruby Red, Steel Blue, Racing Green, Chartwell Green. Plus any RAL painted colour



the **GEORGIAN**
from the Period
Door Collection



the **VICTORIAN**

(design influences by properties built 1830-1901)

THE VICTORIAN door is a perfect replacement for the mock gothic styling of doors from the 1830-1901 era. The elaborate coloured designs and the positioning of the glass units in these doors help to create the ornate glass effect found on a typical Victorian property.

- PVCu doors bespoke to the original property type
- Two design styles available
- Choice of knockers, finger pulls and centre knobs complete the traditional look
- Variety of glass designs
- Fitted with Sigma 3d Adjustable Hybrid Hinges
- Slam shut door locks for authenticity
- 3* high security, Sold Secure Diamond cylinder
- Colours available (includes matching frame):
White Ash, Clotted Cream, Irish Oak, Golden Oak, Mahogany, Rosewood, Schwarzbraun, Anthracite Grey, Slate Grey (grained), Pearl Grey, Elephant Grey, Ruby Red, Steel Blue, Racing Green, Chartwell Green. Plus any RAL painted colour

the **VICTORIAN**

from the Period
Door Collection





the **EDWARDIAN**
from the Period
Door Collection

the **EDWARDIAN**

(design influences by properties built 1901-1918)

THE EDWARDIAN door is a replica design from properties built in 1901-1918. Not quite as lavish as the Victorian, this panelled door is finished with a lead window design to accentuate the appearance of this period of house.

- PVCu doors bespoke to the original property type
- Choice of knockers, finger pulls and centre knobs complete the traditional look
- Variety of glass designs
- Fitted with Sigma 3d Adjustable Hybrid Hinges
- Slam shut door locks for authenticity
- 3* high security, Sold Secure Diamond cylinder
- Colours available (includes matching frame):
White Ash, Clotted Cream, Irish Oak, Golden Oak, Mahogany, Rosewood, Schwarzbrown, Anthracite Grey, Slate Grey (grained), Pearl Grey, Elephant Grey, Ruby Red, Steel Blue, Racing Green, Chartwell Green. Plus any RAL painted colour



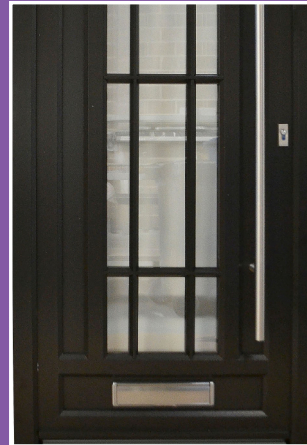


the **ART DECO**

(design influences by properties built 1925-1939)

THE ART DECO door from this collection is designed to replicate the streamlined appearance of doors found on properties built between 1925 and 1939. A simple, modern effect of parallel straight lines created this stunning door and would definitely not look out of place on a house built with an Art Deco edge.

- PVCu doors bespoke to the original property type
- Choice of bar handles and knobs complete the traditional look
- Variety of glass designs
- Fitted with Sigma 3d Adjustable Hybrid Hinges
- Slam shut or key wind door locks for authenticity
- 3" high security, Sold Secure Diamond cylinder
- Colours available (includes matching frame):
White Ash, Clotted Cream, Irish Oak, Golden Oak, Mahogany, Rosewood, Schwarzbraun, Anthracite Grey, Slate Grey (grained), Pearl Grey, Elephant Grey, Ruby Red, Steel Blue, Racing Green, Chartwell Green. Plus any RAL painted colour



the **ART DECO**
from the Period
Door Collection



the **1930S**
from the Period
Door Collection

the **1930S**

(design influences by properties built in the 1930s)

THE 1930S door is based on the half timber and mixed red brick/pebbledash design of properties built in the 1930s. Typically an oak door with iron fittings, we have designed and produced this door with astragal bar to provide the perfect replacement for homes built in this period.

- PVCu doors bespoke to the original property type
- Two design styles available
- Choice of knockers, finger pulls and centre knobs complete the traditional look
- Variety of glass designs
- Fitted with Sigma 3d Adjustable Hybrid Hinges
- Slam shut door locks for authenticity
- 3" high security, Sold Secure Diamond cylinder
- Colours available (includes matching frame):
White Ash, Clotted Cream, Irish Oak, Golden Oak, Mahogany, Rosewood, Schwarzbraun, Anthracite Grey, Slate Grey (grained), Pearl Grey, Elephant Grey, Ruby Red, Steel Blue, Racing Green, Chartwell Green. Plus any RAL painted colour

