

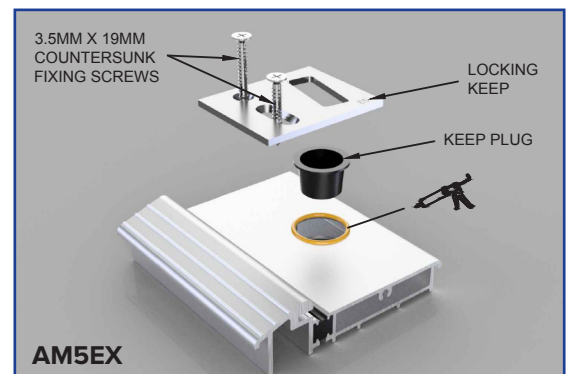
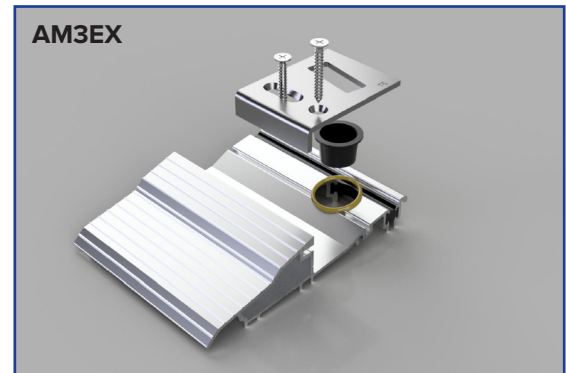
STORMGUARD KEEPS

Recommended Installation:-

- Mark on the threshold the centre of the shootbolt extension that extends out from the bottom of the door sash.
- Drill a 16mm hole into the threshold through both skins, for each shootbolt extension to lock into.
- Silicone inside the holes so they are watertight, then push the plastic plugs supplied into each hole.
- Position and fit the keep plates over each hole. This allows you to adjust for compression, just move the keep to suit either way, whether you require more compression or less.

PARTS FOR FITTING:

- The keeps are screwed to the inside of the bottom of the door sash.
- The end caps are taped to the threshold
- The black keep plugs will be found in a bag with the face drain caps, taped to the sash using green tape.



For further assistance, call 01702 613733

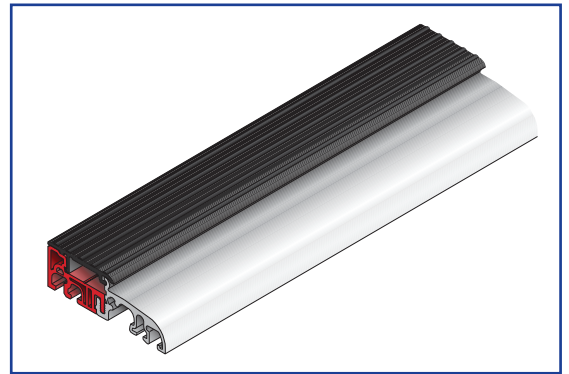
www.climatec-windows.co.uk

11-14 Fletchers Square, Temple Farm Industrial Estate, Southend-on-Sea, Essex SS2 5RN

BKV KEEPS

Recommended Installation:-

- Remove black ribbed strip from low threshold
- Mark where shootbolt extensions extend out from the bottom of the door sash.
- Place and line up the keep in the channel of the threshold.
- Once placed correctly, fix keep by screwing it down.
- Measure, cut and place the black ribbed strip either side of the keep for a tidy secure finish.



PARTS FOR FITTING:

- The keeps are screwed to the inside of the bottom of the door sash.



Image showing completed process

For further assistance, call 01702 613733

www.climatec-windows.co.uk

11-14 Fletchers Square, Temple Farm Industrial Estate, Southend-on-Sea, Essex SS2 5RN